

*Annual Review of Virology*  
Seasonality of Respiratory  
Viral Infections

Miyu Moriyama,<sup>1</sup> Walter J. Hugentobler,<sup>2</sup>  
and Akiko Iwasaki<sup>1,3,4</sup>

<sup>1</sup>Department of Immunobiology, Yale University School of Medicine, New Haven, Connecticut 06520, USA; email: akiko.iwasaki@yale.edu

<sup>2</sup>Institute of Primary Care, University of Zurich and University Hospital, Zurich, Switzerland CH-8091

<sup>3</sup>Department of Molecular, Cellular, and Developmental Biology, Yale University, New Haven, Connecticut 06512, USA

<sup>4</sup>Howard Hughes Medical Institute, Chevy Chase, Maryland 20815, USA

Annu. Rev. Virol. 2020. 7:83–101

First published as a Review in Advance on  
March 20, 2020

The *Annual Review of Virology* is online at  
[virology.annualreviews.org](http://virology.annualreviews.org)

<https://doi.org/10.1146/annurev-virology-012420-022445>

Copyright © 2020 by Annual Reviews.  
All rights reserved

### Keywords

respiratory infection, antiviral immune responses, temperature, humidity, seasonality, indoor climate, outdoor climate

### Abstract

The seasonal cycle of respiratory viral diseases has been widely recognized for thousands of years, as annual epidemics of the common cold and influenza disease hit the human population like clockwork in the winter season in temperate regions. Moreover, epidemics caused by viruses such as severe acute respiratory syndrome coronavirus (SARS-CoV) and the newly emerging SARS-CoV-2 occur during the winter months. The mechanisms underlying the seasonal nature of respiratory viral infections have been examined and debated for many years. The two major contributing factors are the changes in environmental parameters and human behavior. Studies have revealed the effect of temperature and humidity on respiratory virus stability and transmission rates. More recent research highlights the importance of the environmental factors, especially temperature and humidity, in modulating host intrinsic, innate, and adaptive immune responses to viral infections in the respiratory tract. Here we review evidence of how outdoor and indoor climates are linked to the seasonality of viral respiratory infections. We further discuss determinants of host response in the seasonality of respiratory viruses by highlighting recent studies in the field.

### ANNUAL REVIEWS CONNECT

[www.annualreviews.org](http://www.annualreviews.org)

- Download figures
- Navigate cited references
- Keyword search
- Explore related articles
- Share via email or social media

---

**Respiratory tract:**

passage formed by the mouth, nose, throat, larynx, and trachea, including conducting and respiratory bronchi, bronchioles, and alveoli

**Absolute humidity**

**(AH):** describes the water content of air and does not change when air is heated or cooled

**Viability of****respiratory viruses:**

ability of infecting a host cell

**Thermal comfort**

**zone:** operating temperature range of roughly 20 to 24°C, depending on activity, clothing, draft, radiant asymmetry, and individual attributes

**Relative humidity**

**(RH):** water content in air, relative to the maximum capacity of air to hold water vapor; changed by heating or cooling

---

## 1. INTRODUCTION

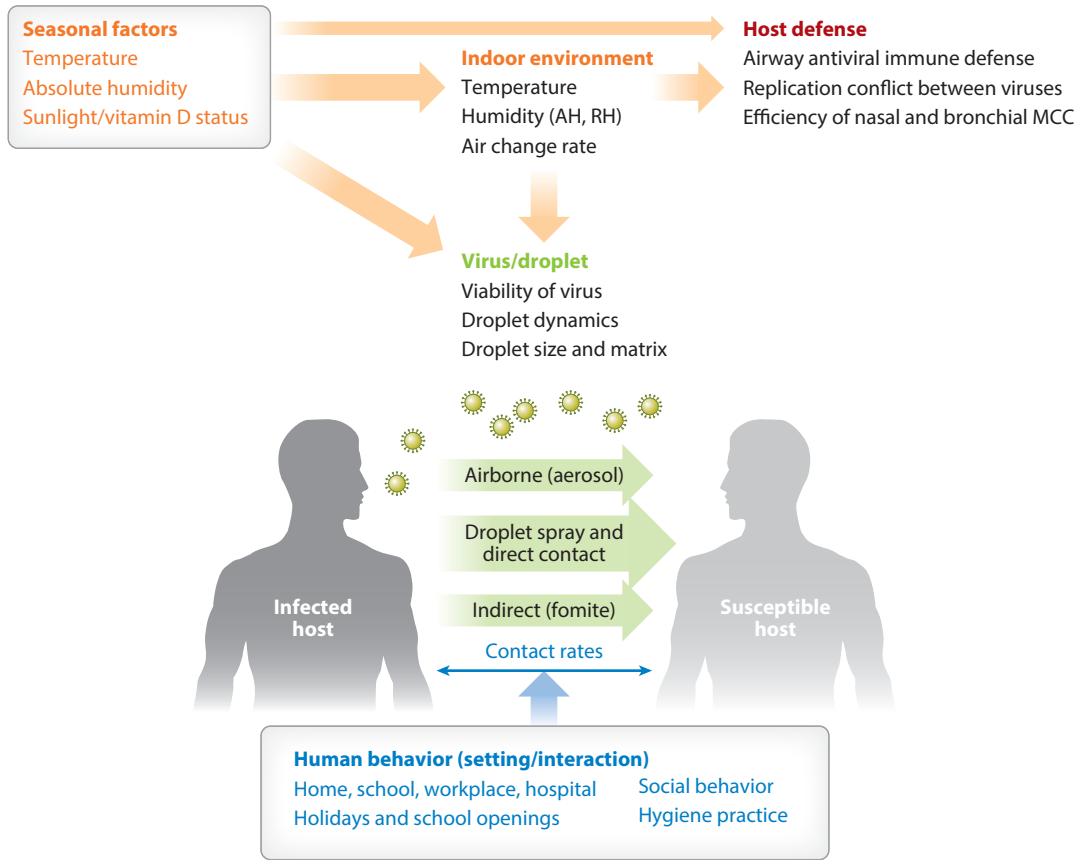
One of the earliest accounts of the winter epidemic of respiratory infectious disease can be found in the “Book of Epidemics,” an ancient Greek record written by Hippocrates around 400 BC (1). Since then, many respiratory viruses have been identified as the etiological agents of such epidemics. Remarkable advances in virology and immunology have elucidated the underlying cause of such seasonal infections. Despite major efforts in public health, epidemics of viral respiratory tract infections continue to be highly prevalent among healthy human populations and can lead to lethal consequences in susceptible individuals. Estimated costs in the United States for the common cold are \$40 billion per year (2) and over \$87 billion per year for influenza (3). Furthermore, emerging virus epidemics, such as the 2002–2003 severe acute respiratory syndrome coronavirus (SARS-CoV) and the recently emerged SARS-CoV-2, occur during the winter months (4–7), indicating that the winter environment promotes the spread of a variety of respiratory virus infections.

Accumulating studies point to possible seasonal determinants in the epidemics of respiratory viruses as well as host factors affected by these contributing factors. These include seasonal changes in temperature, absolute humidity (AH), sunlight, vitamin status, and host behavior (8–16). These proposed factors can be classified as seasonal changes of environment, human behavioral patterns, and viral factors (**Figure 1**). Environmental factors affect host susceptibility by modulating airway defense mechanisms and affect viability and transmission of respiratory viruses. Human behavioral patterns affect the contact rates between infected individuals and susceptible individuals. Among potential drivers of seasonality, fluctuation of temperature and AH throughout the year has been proposed as a critical factor in the seasonal increase in respiratory virus infections, especially in the context of the epidemics in the winter season (12, 15–18). This review focuses on how seasonal environmental outdoor and indoor factors influence transmission and host airway response to viruses and how such changes in the host defense ultimately result in the seasonal circulation of the respiratory viruses.

## 2. EFFECT OF OUTDOOR SEASONAL CLIMATE ON INDOOR CLIMATE

The term seasonal infection associates a specific infection with a distinct season of the year. Consequently, the perceived relationship between infections and seasonal climate is considered to be causal. This was accurate to some extent when humans lived and worked outdoors with minimal protection from even the most severe climate conditions. The industrial revolutions changed all this. Outdoor agricultural workplaces were relocated into factories and offices, moving human lifestyle away from nature and outdoor climate. With the widespread introduction of central heating and increasingly airtight, insulated building shells, a consistent thermal comfort zone could be maintained indoors, causing even further disconnection from daily and seasonal outdoor climate fluctuations. This disconnection is particularly evident in winter, when indoor heating causes a major divergence of indoor and outdoor temperature and relative humidity (RH) but does not affect AH. Measurements of indoor humidities in 40 residential apartments in New York (19) and in 6 high-quality commercial buildings in the Midwest (20) showed indoor vapor pressure of below 10 mb or indoor RH of below 24% in the winter. Thus, wintertime low AH outdoors translates into low indoor RH, within the comfort temperature range of 20 to 24°C.

The number of people-to-people contacts significantly increases on workdays compared to weekends, while local weather conditions such as rain, sunshine, and coldness have minor effects on the contacts (21). These results contradict the frequently voiced idea that indoor gathering because of nasty weather conditions has a relevant effect on the seasonality of infections. In the industrialized world, most people interact, work, sleep, commute, and spend 90% of their lifetime



**Figure 1**

Factors that affect respiratory virus transmission. Seasonal environmental factors modulate host airway immune responses and affect viability and transmission ways of respiratory viruses. Human behavior affects the contact rates between infected and susceptible individuals. Abbreviations: AH, absolute humidity; MCC, mucociliary clearance; RH, relative humidity. Figure adapted from image created with BioRender.com.

in enclosed spaces, where they share a limited amount of breathing air (22, 23). This implies that the overwhelming majority of person-to-person transmission events happen indoors. The corollary implication is that indoor climate and air change rates, modulated by outdoor seasonal conditions, are the key drivers of seasonal patterns in epidemiology. In addition, exposure to outdoor conditions (albeit 10% of lifetime) contributes to alteration of respiratory defense on the existing virome (24). The multiple factors described in **Figure 1** modulate the spatiotemporal onset and progression of seasonal respiratory viral infections. With this in mind and focusing on temperate regions, we discuss the importance of environmental factors on the transmission of respiratory viruses and the host immune response.

### 3. SEASONALITY OF RESPIRATORY VIRUSES IN THE HUMAN POPULATION

To date, at least nine distinct viruses have been identified as common causative agents for respiratory tract infection (25, 26). According to the epidemiological studies in temperate regions, most of the respiratory viruses have seasonal oscillation of their outbreaks (**Figure 2**). Influenza

**Virome:** the collection of eukaryotic and prokaryotic viruses that are found in animals including humans

Month	June	July	Aug.	Sep.	Oct.	Nov.	Dec.	Jan.	Feb.	Mar.	Apr.	May
Winter virus						Influenza virus						
						HCoV						
						RSV						
All-year virus	Adenovirus/HBoV											
Type-specific	PIV3		PIV1									
Spring	hMPV											
Spring/Fall	Rhinovirus											
Summer virus	Non-rhinovirus enteroviruses											

**Figure 2**

Schematic of seasonality of respiratory virus infection in temperate regions. Respiratory viruses are classified in three groups according to their seasonal epidemics. Influenza virus, human coronavirus (HCoV) (such as strains OC43, HKU1, 229E, and NL63), and human respiratory syncytial virus (RSV) show peaks in winter (winter viruses). Adenovirus, human bocavirus (HBoV), parainfluenza virus (PIV), human metapneumovirus (hMPV), and rhinovirus can be detected throughout the year (all-year viruses). Seasonal patterns of PIV are type specific. Epidemics of PIV type 1 (PIV1) and PIV type 3 (PIV3) peak in the fall and spring-summer, respectively. The prevalence of some non-rhinovirus enteroviruses increases in summer (summer viruses). The months indicated at the top are based on Northern Hemisphere. Figure adapted from image created with BioRender.com.

**Winter virus:** term used for a respiratory virus that displays a distinct increase in cases and detection frequency in the winter trimester

**All-year virus:** term used for a respiratory virus that causes infections and can be detected all year round

**Summer virus:** term used for a respiratory virus that displays a distinct increase in cases and detection frequency in the summer trimester

**Droplet spray:** particles of wide size spectrum (up to millimeters) generated by sneezing, coughing, or talking

virus, human coronavirus, and human respiratory syncytial virus (RSV) clearly show peak incidences in the winter months (leading to them sometimes being called winter viruses) (14, 27–31). Conversely, adenovirus, human bocavirus, human metapneumovirus (hMPV), and rhinovirus can be detected throughout the year (all-year viruses) (30–32). For some enteroviruses, detection frequency and case numbers increase in summer (summer viruses) (33, 34). Although infection rates peak in spring and fall, disease severity caused by rhinovirus infection increases in winter (35, 36). Furthermore, parainfluenza virus (PIV) shows a type-specific pattern of seasonal circulation (37) (**Figure 2**).

Replication conflicts among those respiratory viruses can contribute to the nonoverlapping peak incidence with respect to one another. Interference between respiratory viruses has been recognized by epidemiological observation that influenza viruses and RSV do not share peaks during the same period even though both are prevalent in winter (38). During the influenza pandemic in 2009, rhinovirus prevalence was considered to delay the introduction of the influenza pandemic into Europe (39, 40). Using statistical approaches, a recent study shows a strong negative interaction between seasonal influenza A virus and rhinovirus at both the population and individual levels (41). Several possible mechanisms of the interference have been proposed, including disruption of cell surface viral receptor, cell death, or the host interferon (IFN) responses (41–43). Protective antibody-driven interferences have also been proposed for the conflict of genetically close viruses such as PIV, hMPV, and RSV (44).

#### 4. EFFECT OF ENVIRONMENTAL FACTORS ON STABILITY AND TRANSMISSION OF RESPIRATORY VIRUSES

Respiratory virus infection can occur through (a) direct/indirect contact, (b) droplet spray in short-range transmission, or (c) aerosol in long-range transmission (airborne transmission) (45). Airborne transmission occurs as droplet spray of predominantly large droplets up to millimeters

**Table 1 Droplet transmission under different relative humidity conditions**

Climate/season	Outdoor absolute humidity	Indoor relative humidity (%)	Respiratory virus stability	Proportion of droplet nuclei	Viability of respiratory viruses	Predominant transmission
Tropical	High	60–100	High	Low	High	Fomite, direct and indirect contact
Temperate: spring, fall	Intermediate	40–60	Low	Low	Low	All transmission ways possible
Temperate: winter	Low	10–40	High	High	High	Predominantly airborne

settling directly or by indirect contact on mucous membranes or by inhalation of either large respiratory droplets (>10 μm in diameter) or small airborne droplet nuclei (<5 μm in diameter). The relative importance of these modes for influenza virus transmission has been reviewed (46, 47). The viral transmission efficiency through all routes is affected by indoor and outdoor seasonal environmental factors (**Figure 1**). In this section, we focus on the effects of environmental factors on the properties of the viral particle within the droplet matrix, especially on the stability and transmissibility of respiratory viruses.

#### 4.1. Stability of Respiratory Viruses

There are numerous findings in current literature that correlate the viability of influenza virus, suspended within the droplet matrix, with the degree of droplet evaporation and the associated supersaturation of the enclosed ingredients (48–51). The state of vapor equilibrium in room air, expressed as saturation ratio or RH, affects all infectious droplets with respiratory viruses, independent of their source (respiratory tract or aerosolized from any fluid) and location (in air or settled on surfaces). RH therefore affects all transmission ways but has the most pronounced effect on airborne transmission. Animal transmission studies with guinea pigs and ferrets have revealed that the equilibrium state in high RH (>60%) and low RH (<40%) seems to allow viability of influenza viruses in droplets, while in intermediate RH (40% to 60%) viruses become inactivated (47, 49, 52–54) (**Table 1**).

It is assumed that temperature and humidity modulate the viability of viruses by affecting the properties of viral surface proteins and lipid membrane (12, 55). Viability experiments with various aerosolized respiratory viruses have been performed in aerosol chambers with controlled temperature and RH (56–61) (**Supplemental Table 1**). Known quantities of viruses were nebulized from solutes containing salts and proteins, and viral decay rates were measured by viral plaque assays. The results indicate a striking correlation of the stability of winter viruses at low RH (20–50%), while the stability of summer or all-year viruses is enhanced at higher RH (80%) (**Supplemental Table 1**). Earlier studies examined the aerosolized influenza virus viability under various temperatures and/or RH (57, 62). These studies found that temperatures in the thermal comfort zone and low RH condition, typical indoor winter features in temperate climates, slow inactivation of influenza virus. More recently, an analytical chemistry approach revealed that the low-temperature condition promotes the ordering of lipids on the viral membrane and contributes to the stability of the influenza virus particle (63).

#### 4.2. Transmission of Respiratory Viruses

Influenza virus transmission models have been established in mice, ferrets, and guinea pigs (54, 64–68). The early studies using specialized apparatus for viral transmission between mice

#### Supplemental Material >

**Respiratory droplet:** aerosol droplets with a wide range of sizes from micrometers to millimeters, produced by a variety of aerosol generating processes

**Droplet nuclei:** droplets <5 μm after adjustment to ambient conditions (dried residues); can be inhalable deep into lower airways

**Droplet matrix:** all components of a liquid droplet including the water except the microbe; also called droplet medium

**Humidity:** the amount of water vapor present in air

**Aerosol:** suspension of fine solid or liquid particles in air or another gas, including the gas phase itself

### Respiratory

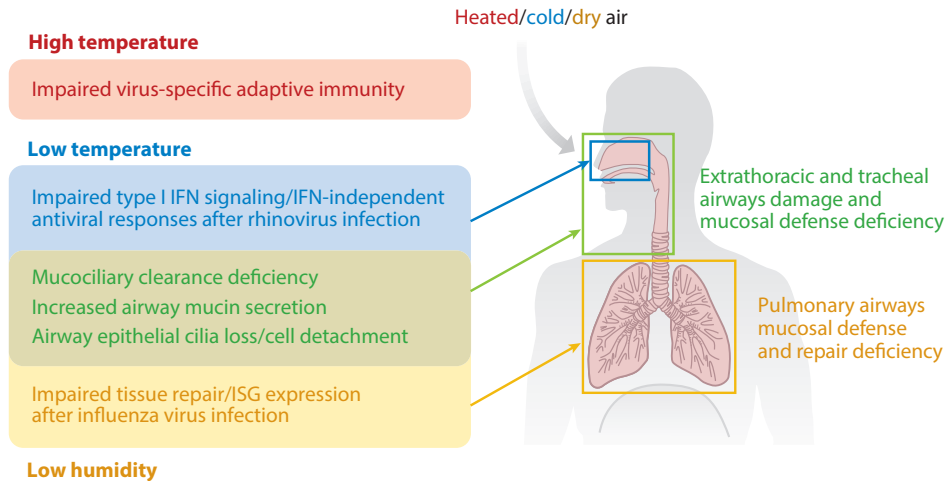
**infection:** infection caused by pathogens targeting the respiratory tract as their replication site

demonstrated the possibility that dry and unventilated air can increase opportunity to spread influenza virus infection in wintertime (69). The transmission rate between infected and uninfected mice placed in the same cage was enhanced under 47% RH compared to 70% RH, as well as under lesser ventilated conditions. Because influenza transmission does not readily occur between infected and naïve mice simply placed in the same cage (67), mice experiments used mice-adapted influenza viruses (64, 65, 70).

In contrast to mice, guinea pigs allow transmission of human pathogenic influenza viruses and have some human-like properties such as the existence of the functional Mx GTPase antiviral gene and human type ( $\alpha 2-6$ ) sialic acid receptor in the upper respiratory tract epithelia (68, 71). Due to these advantages, the effect of temperature and humidity on the transmission of influenza virus was investigated in guinea pigs (52, 53, 72). Four pairs of infected and uninfected guinea pigs were placed in climate chambers such that airflow was directed from the infected toward the uninfected guinea pigs. The transmission efficiency was evaluated by the virus shedding in the nasal wash from the exposed naïve animals. At 20°C, transmission of influenza virus was not observed under high RH (80%). In contrast, the transmission was highly efficient under low RH (~20–35%) at 20°C. Viral transmission was generally more efficient at 5°C compared to 20°C. Of note, 5°C ambient air temperature allowed 50% transmission even under 80% RH. One possible explanation of this result could be the reduced mucociliary clearance (MCC) and increased stability of virion remaining on the upper respiratory mucosa at 5°C (52). Another possible explanation is that AH at 5°C (~5.5 g/m<sup>3</sup>) is much less than at 20°C (~14 g/m<sup>3</sup>), although RH is the same (80%). In contrast to temperate regions, respiratory infections have little seasonality in tropical regions. A study focusing on that aspect showed that no aerosol transmission was observed at 30°C at any humidity despite contact transmission being comparable at 30 and 20°C (53). Thus, high ambient temperature likely negates the effect of humidity on influenza transmission in tropical zones. Based on these results, Lowen & Palese (47) predict that aerosol transmission predominates during the winter season in temperate regions (because dry and warm indoor climate allows stability of influenza viruses in desiccated droplet nuclei that stay airborne for prolonged periods), while contact is the major mode of spread in the tropics (because in warm and humid climates, droplets evaporate less water and readily settle on surfaces). This hypothesis is illustrated in **Table 1** and has considerable effect on proper precautions and public health measures against respiratory virus infections in different parts of the world and in different seasons.

More recently, ferrets have been used for evaluating the contribution of the environmental conditions to influenza viral transmission (54). In agreement with the results obtained in the previous studies using mice and guinea pigs, respiratory droplet transmission efficiency between ferrets was found to be most efficient under 23°C/30% RH conditions and least efficient at 23°C/50% RH and 5°C/70% RH.

In addition to the finding that low RH enhances aerosol influenza transmission, there is another common thread found throughout the diverse animal models: that aerosol viral infection rate drops under intermediate RH atmosphere. Lowen et al. (52) observed that transmission between guinea pigs was inefficient at 50% RH and more efficient at both low (20–35%) and high (65%) RH at 20°C. Similarly, the transmission rate between ferrets at 30% and 70% RH was higher than that of 50% RH at 20°C (54). This phenomenon is consistent with the results demonstrated in the mouse aerosol infection model (70). In this study, the morbidity of mice exposed to virus-containing atmosphere under various RHs at ~22–24°C was examined. At intermediate RH (~40–60%), 77.5% of subjected mice survived, even though they were exposed to atomized virus suspension enough to kill all subjected mice at 23% RH. Therefore, an ideal humidity for preventing aerosol respiratory viral transmission at room temperature appears to be between 40% and 60% RH.



**Figure 3**

Effect of environmental factors on the host airway defense mechanisms. The extrathoracic and tracheal mucosal surface defense is directly affected by the seasonal changes in temperature and water content of the inhaled air on both infected and susceptible hosts. The immunological part of this effect extends into the lung periphery and lung tissue for unknown reasons. Abbreviations: IFN, interferon; ISG, interferon-stimulated gene. Figure adapted from image created with BioRender.com.

## 5. EFFECT OF ENVIRONMENTAL FACTORS ON THE HOST AIRWAY ANTIVIRAL DEFENSE

The mucosal surface of the respiratory tract is continuously exposed to inhaled environmental air containing volatile and nonvolatile pollutants and potentially various pathogens. Multi-tiered host airway defense systems prevent infection by incoming respiratory viruses (73). Seasonal fluctuations of temperature and humidity of the inhaled air have been shown to directly affect the airway mucosal surface defense at multiple levels (**Figure 3**). In this section, we focus on the effect of environmental factors on the host airway antiviral defenses.

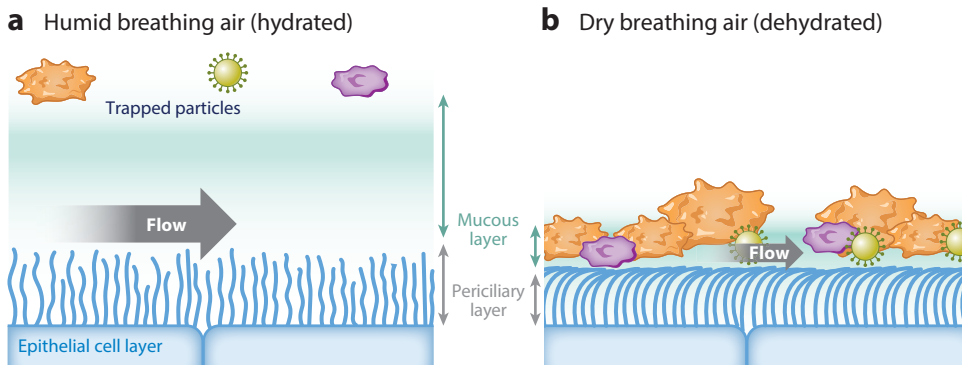
### 5.1. Intrinsic Barriers

The intrinsic barrier provides the first line of defense against respiratory viruses on the mucosal surface of the respiratory epithelium. Different airway epithelium composition in the different parts of the respiratory tract creates the airway diameter-dependent barrier defenses (73). The epithelial cells lining the airway surface comprise an efficient mechanical barrier, as well as provide MCC. Furthermore, mucus secreted from the goblet cells and submucosal glands in the larger conducting airways confers chemical barriers at the mucosal surface (74).

**5.1.1. Mucus production.** An incoming virus first must find epithelial cells to invade the host. Mucus layers can effectively trap the virus before it can enter the host cells (**Figure 4**). Mucus secreted from the submucosal glands within the lamina propria serves as a mechanical barrier and as a chemical barrier by its antimicrobial properties (74, 75). Components of the mucus are 93–97% w/w water, 3–7% w/w solids, 1–3% w/w glycoproteins, 1% w/w proteins, 0.5–1% w/w lipids, and 0.70–1.4% w/w minerals (76). The major glycoproteins in the airway mucus are secretory mucin proteins MUC5AC and MUC5B (77). Cold environments have been linked

**Mucus:** viscoelastic, adhesive secretion containing water, carbohydrates, proteins, and lipids, produced by secretory cells and the submucosal glands

**Conducting airways:** mucus-lined upper airways (first to sixteenth generation of bronchi in humans)



**Figure 4**

Effect of dry air on mucociliary clearance. (a) Proper mucus hydration is required for the efficient mucous transport. (b) Dehydration caused by dry breathing air leads to increased viscoelasticity of the mucous layer and immobilizes cilia, which are pressed down by the reduced height of the dehydrated periciliary layer. Figure adapted from image created with BioRender.com.

to exacerbations of chronic obstructive pulmonary disease (COPD), which manifests in chronic airflow obstruction, inflammation, and hypersecretion of respiratory mucus (78, 79). In the normal human bronchial epithelial (NHBE) cells isolated from COPD patients, the expression level of the transient receptor potential melastatin 8 (TRPM8), which is the cold receptor activated by temperature under 27°C or cooling agents including menthol (80, 81), is upregulated (82). Furthermore, cold (18°C) exposure or menthol treatment of cultured NHBE cells increases MUC5AC secretion in a TRPM8-dependent manner (82, 83). Another study examined the effect of temperature, humidity, and airflow mimicking respiration on mucin secretion from human nasal epithelial cells using a climate chamber for cell culture (84). Mucin production increased under 25°C, 40% RH compared to 37°C, 80% RH. Airflow increased mucin production under 25°C, 40% RH, but not at 37°C, 80% RH. These results suggest that impairment of MCC under low temperature and low humidity includes hypersecretion of mucin.

**5.1.2. Airway epithelial integrity.** The airways have a type I mucosal surface, which is covered by a single-layer epithelial lining to perform respiratory functions (85). The airway epithelial layer serves as the second line of defense after the mucus layer to provide a physical barrier within the respiratory tract. Immediate repair of the airway epithelia is critical to maintain the integrity of the respiratory tract. A study using guinea pigs demonstrates that the experimentally injured airway epithelial surface is re-established within 8–15 h (86). The epithelial cells at the edge of the damaged area migrate rapidly and flatten to cover the damaged zone, followed by re-epithelialization (86). Inhaling dry air causes immediate airway epithelial cilia loss, detachment of epithelial cells, and inflammation of the trachea of guinea pigs (87). Moreover, dry air exposure of mice impairs epithelial cell repair in the lung after influenza virus infection (88). Disruption of airway epithelial integrity caused by inhalation of dry air might be involved in the winter epidemics of certain types of respiratory virus infections.

**5.1.3. Mucociliary clearance.** MCC serves as a key mechanism for eliminating the inhaled pathogens and irritants from the respiratory epithelial surface (75). The double mucus layer with different viscosities enables efficient MCC (Figure 4). The viscous mucosal layer facing the airway cavity entraps microparticles and microorganisms, and the watery lower mucus layer adjacent



to the epithelia (periciliary layer) transmits the force of the ciliated cells to move microorganisms and particle-containing mucus toward the outside of the nose in mice and toward the larynx in humans, where mucus and entrapped particles and microbes are swallowed or expectorated (75). Inhaling cold air, which is always dry because of the limited water storage capacity of cold air, causes impairment of MCC. A study on the effect of ambient temperature on the ciliary beat frequency of the nasal and tracheal ciliated cells isolated from human subjects showed that mucociliary beating begins to decline as the temperature dips below 20°C and is no longer observed at 5°C (89). Another study focused on the MCC under various physiological conditions revealed that inhaling cold air slows MCC rates in living chickens (83). A more recent study showed that preincubation of mice in a low RH environment (10% RH) decreases MCC compared to 50% RH, resulting in impaired viral clearance following influenza virus infection (88). Given that the MCC depends on the maintenance of double mucus layers with two different viscosities and a delicate osmotic balance, proper mucus hydration is required for an efficient mucus transport. A review on the relationship between temperature and humidity of inhaled air and properties of airway mucosa found that 100% RH at core temperature is the optimal condition for the efficient mucosal functions and airway defense in humans (90). Mucus dehydration caused by breathing air of low humidity leads to decreased MCC. Water loss of the mucus layer transfers to the periciliary layer, reduces its height, and immobilizes the pressed down cilia (75) (**Figure 4**). The effect of humidity on nasal, tracheal, and bronchial MCC has been well studied in animals (88, 90, 91).

In humans, nasal MCC has been investigated (92–94). These studies showed that nasal MCC was not affected by dry breathing air in young healthy persons (92) but mucociliary speed decreased progressively in 174 test persons (different ages and genders) when RH of breathing air was reduced from 70% to 20% (93). One study showed that mucociliary speed is affected by alternative unilateral congestion and decongestion of the nasal cavities induced by the nasal cycle (94). Ventilation of anesthetized patients with unheated (<37°C) and not water-saturated anesthetic gases leads to diminished ciliary activity, cell damage, and ultimately cell death of bronchial epithelia (95, 96).

## 5.2. Inducible Antiviral Innate Immunity

Innate immune responses, induced in response to a viral infection, confer critical protection within the respiratory mucosa. Multiple classes of innate immune sensors recognize virus-associated molecular patterns to initiate downstream antiviral signaling, including the production of type I and type III IFNs (97). These IFNs are key effector cytokines that signal through their cognate receptors on neighboring cells to trigger the expression of hundreds of IFN-stimulated genes (ISGs). These ISGs act on various stages of the viral replication cycle to induce an antiviral state (98). Whether environmental factors affect the host antiviral innate immunity was previously unknown. Recent studies reveal that season-dependent environmental factors, such as temperature and humidity, can affect the host antiviral innate immunity against respiratory virus infections (88, 99–101).

Human rhinoviruses, a major cause of the common cold, cause illness mostly in winter. In tissue culture, rhinoviruses are known to replicate much better at 33°C, which mimics the cooler temperature of the nasal cavity, than at the core body temperature found in lower airways (37°C). What makes this virus so adept at replicating at the low temperature? A study focusing on the effect of ambient temperature on the host cells demonstrated that the preferential replication of rhinoviruses at 33°C has to do with the inefficient host antiviral response at this temperature (99). At 33°C, rhinoviruses triggered only low levels of type I IFN production from infected airway epithelial cells. Moreover, knocking out a key innate viral sensor signaling molecule, MAVS, needed

---

**Nasal cycle:**  
unconscious, alternating partial congestion and decongestion of the nasal cavities to optimize air conditioning and filtration and avoid mucosal desiccation

---

to produce type I IFN from host cells rescued restricted rhinovirus replication at 37°C. These results show that robust host antiviral response at the core body temperature might block rhinovirus spread in the lower airways due to robust host IFN response. Further, the study implies that exposure of the nose to cooler air during the winter may enable robust rhinovirus replication. In addition to the IFN production, a follow-up study revealed that both apoptosis and an antiviral ribonuclease, RNase L, confer temperature-dependent antiviral resistance to rhinovirus at the warmer temperature (100). These studies collectively suggest that effective rhinovirus replication in the lower temperature in the nasal cavity upon inhalation of cold air in the winter is driven in part by impaired host innate immune responses. Conversely, keeping the nose warm during the winter might boost antiviral innate resistance to the common cold virus.

One of the best-known links between an environmental factor and influenza disease is the drop in AH. Seasonal epidemics of influenza virus–related mortality are preceded by a drop in AH levels during the winter season in the United States (18). How does low outdoor AH affect seasonal influenza epidemics? As explained above, low outdoor AH leads to low indoor RH. A clue to this question comes from a recent study in mice that exposed mice to low RH of 10–20%. Using mice carrying a functional myxovirus resistance protein 1 (Mx1) gene, a key ISG that restricts influenza virus replication absent in most inbred mouse strains (102), the study found that Mx1 mice housed in 10–20% RH succumbed to influenza virus infection more rapidly than those housed in 50% RH. The study found at least three separate mechanisms that can contribute to the susceptibility of mice at low humidity. First, as discussed above, MCC was severely impaired at low humidity (88). Second, exposure to low humidity impaired airway tissue repair mechanisms. Third, a single-cell RNA sequencing analysis of the lung tissue collected from Mx1 mice revealed that the exposure to dry air impairs global ISG expressions following intranasal influenza virus infection (88). A striking finding is that ISG expression was impaired not only in the airway epithelial cells but also within the cell types found throughout the lung. How exactly dry air affects IFN response in the respiratory tract is currently unknown.

### 5.3. Other Innate Defense Mechanisms

Direct pathogen clearance by phagocytosis or production of reactive oxygen species (ROS) plays an important role as the nonspecific immune response. Seasonal oscillation of the daylight period modulates the physiological activity of mammalian species through daily melatonin pulse (9). Exposure of Siberian hamsters to the short daylight period (8 h) decreased phagocytotic activities and ROS productions of granulocytes and monocytes compared to the long daylight period (16 h) exposure (103). In contrast, the short daylight period increased natural killer cell cytotoxicity. Vitamin D biosynthesis is also modulated by sunlight. During the winter season, vitamin D deficiency is common presumably because of insufficient sunlight (10). In vitro cultures of bone marrow–derived macrophages isolated from vitamin D–deficient mice impair macrophage maturation, production of surface antigen as well as lysosomal enzymes, and H<sub>2</sub>O<sub>2</sub> production (104). Collectively, these data suggest short daylight as a contributing factor in the impairment of the innate immune responses in winter.

### 5.4. Virus-Specific Adaptive Immunity

Adaptive immunity provides highly specific and long-lived protection against infectious agents. The initiation of adaptive immunity begins when antigen-presenting cells stimulate naïve virus-specific T cells to become activated, expand, and differentiate into effector T cells that can mediate antiviral responses at the site of infection (105). T follicular helper cells are also critical in promoting B cell activation and differentiation to provide antiviral antibody responses (106).

Apart from the respiratory virus infections, enhanced effector T cell-mediated responses in mice housed at a higher temperature have been described in the context of antitumor immunity (107, 108) as well as graft-versus-host disease (GVHD) (109). Housing mice at a higher temperature (30°C), a thermoneutral temperature for mice, suppressed tumor growth compared with the typical housing temperature at 22°C by increasing the number of antigen-specific CD8<sup>+</sup> T cells (107). Consequently, sensitivity to the pancreatic cancer therapy was higher in mice housed at 30°C rather than 22°C (108). Similarly, transplantation of major histocompatibility complex-mismatched bone marrow cells induces severe GVHD in mice housed at 30°C, whereas those housed at 22°C are resistant to the onset of GVHD with the given treatment (109). These studies suggest that the housing temperature of the host can affect the adaptive immune responses in general and imply that vaccines should be given at an optimal temperature to induce maximal immunity.

In the context of respiratory virus infection, a recent study suggested that a high ambient temperature mimicking a summer heat wave weakens virus-specific adaptive immunity following influenza virus infection in mice (101). The study showed that heat exposure of mice (36°C) impairs virus-specific CD8<sup>+</sup> T cell responses and antibody production after intranasal influenza virus infection. These impaired antiviral immune responses in heat-exposed mice were partially restored by glucose or short-chain fatty acid supplementation, suggesting a role for diet and microbiome in heat-mediated immune impairment. According to a Centers for Disease Control and Prevention surveillance report, all six recent influenza pandemics occurring in the Northern Hemisphere during 1957–2009 were spring to summer (110). The role of abnormal temperature fluctuations in flu pandemics will become even more relevant with the increasing effect of global warming and climate change.

## **6. EFFECT OF ENVIRONMENTAL FACTORS ON DISEASE TOLERANCE TO RESPIRATORY VIRUSES**

Disease tolerance is a mechanism to cope with infections by decreasing the deleterious effect of tissue damage caused by pathogens or host immune responses without directly affecting pathogen burden (111). For instance, lethal and pathological consequences of influenza infection in TLR7- and MAVS-deficient Mx1 congenic mice were tolerated in the absence of caspase-1/11 without affecting viral burden (102). This study revealed that lethality of influenza infection in the absence of innate resistance is mediated by the activation of inflammasome-mediated neutrophil activation.

Low humidity exposure of Mx1 congenic mice has been shown to increase mortality, weight loss, and pulmonary viral burden following influenza virus infection (88). Furthermore, severe tissue damage after influenza virus infection was observed in the lung tissue of dry air-exposed mice. Of note, caspase-1/11 deficiency rescued disease and lethality that occurs in dry air-exposed infected mice. These studies suggest that mice exposed to low humidity conditions, which dampen global ISG expressions and impair antiviral resistance, can tolerate the infection if they are lacking the inflammasome caspases. This concept can be extended to other settings in which antiviral innate resistance is impaired, such as in older adults (112). Thus, interfering with inflammasome caspases might provide a therapeutic window to counter the deleterious consequences of influenza-mediated diseases by enhancing disease tolerance.

## **7. CONCLUDING REMARKS AND FUTURE DIRECTIONS**

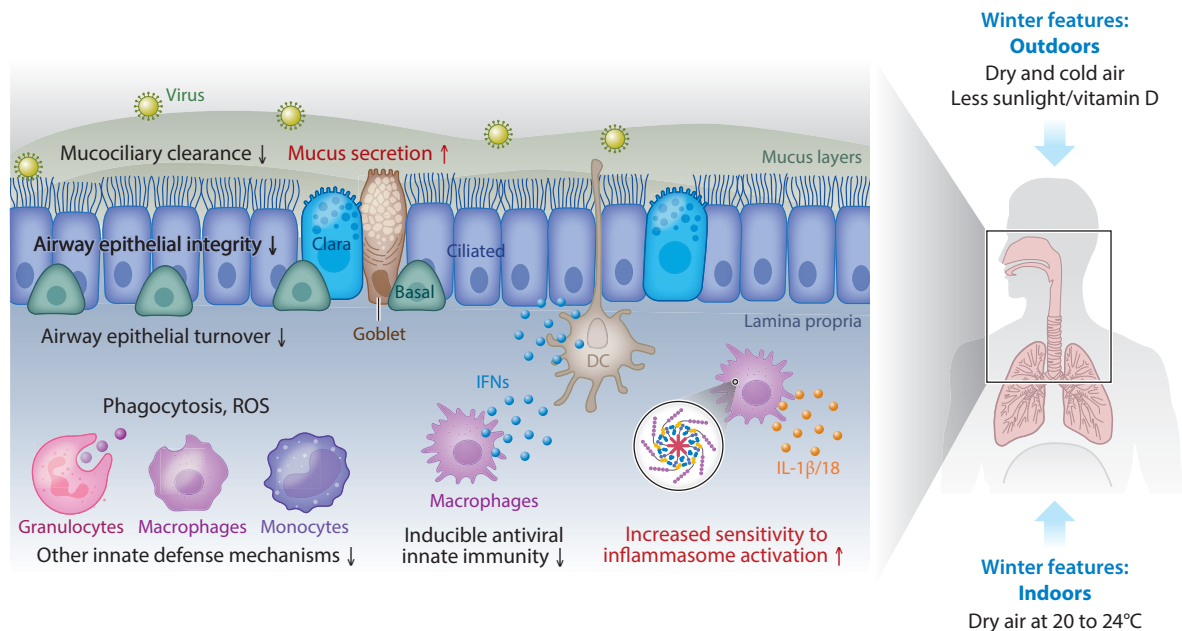
By virtue of being exposed to ambient air by breathing, the nasal and tracheal mucosal surface of the respiratory tract is affected by ambient temperature and the water content of the inhaled

air (74). Inhalation of dry air causes epithelial damage, MCC impairment, and increased mucin production (84, 87, 88). Impaired ISG expression and tissue repair and increased viral burden and mortality after influenza virus infection have been proven in mice exposed to 7 days of low RH of 10–20% (88). Devastating disease course following dry air exposure is mediated by inflammasome caspase activation. Similarly, inhalation of cold ambient air impairs MCC and increases mucin production (82, 83, 89). Lower temperature impairs type I IFN-mediated and IFN-independent antiviral defense mechanisms after rhinovirus infection (99, 100). In contrast, exposure of mice to heat wave-level high temperature dampens virus-specific adaptive immune responses after influenza virus infection (101). The animal studies demonstrate a dramatic effect of environmental conditions on every aspect of host response to respiratory infection and disease. The intervention studies in school and nursery children, office workers, and army recruits have shown that increasing humidity from low to median range reduced respiratory infection rates and absenteeism (113).

The human-to-human transmission of the SARS-CoV-2 in Wuhan, China, began in December 2019 (4, 5). SARS-CoV-2 is a close relative of SARS-CoV (114), which spread during the winter of 2002–2003 (6, 7). Given that the expression of the receptor for both SARS-CoV-2 and SARS-CoV, angiotensin-converting enzyme 2 (114, 115), appears to be concentrated in a small population of type II alveolar cells (116), we speculate that the low humidity and temperature environment would promote the viability of SARS-CoV-2 in the droplets and impaired ciliary clearance and innate immune defense, for robust access to the deep lung tissue and rapid transmission between infected individuals. Since the respiratory airways, where the type I and II alveolar cells are located, are not reachable by respiratory droplets with a diameter of more than 5 micrometers (45, 46), it appears likely that at least the severe cases of COVID-19 with viral pneumonia are the result of airborne transmission events. A recent study that examined province-level variability of the basic reproductive numbers of COVID-19 across China found that not only dry and cold locations experience high viral spread, but certain locations with high AH also have higher viral transmission within the population (117). The precise relationship between temperature, humidity, and COVID-19 will become more evident as the Northern Hemisphere reaches the summer months.

Seasonal changes in the environmental factors can affect not only local defense mechanisms but also systemic physiological changes. Thermoneutral temperature housing potentiates anti-tumor immunity and GVHD onset in mice (107–109). In addition, a short daylight period and consequent deficiency of vitamin D impair nonspecific immune responses (103, 104). In conclusion, the combination of low humidity, temperature, and sunlight may trigger an impairment of the local and systemic antiviral defense mechanisms, leading to the increased host susceptibility to the respiratory viruses in winter (**Figure 5**).

A number of studies demonstrate the effect of the environmental factors on the respiratory virus stability and transmission rates. In addition, several studies now reveal the effects of environmental factors on the host defense to the respiratory virus infection and the underlying molecular mechanisms. Collectively, we can begin to assemble the factors that promote viral spread and disease in the winter months for cold and influenza viruses. However, other respiratory virus infections peak in spring or summer. One of the possible explanations is the replication conflict among respiratory viruses. Co-infection of winter respiratory viruses and spring respiratory viruses in the animal model may provide insights into the unknown mechanisms of spring-to-summer epidemics. Another unresolved issue is the observation that even in the highly controlled environment of the animal housing setting (22.2°C, 50% RH, controlled light/dark cycle) using the same viral stock, rate of transmission of influenza virus was higher when the experiments were carried out in the winter (November to April, 58.2%) versus summer (May to October, 34.1%) (65). Thus, in addition to temperature, lighting, and humidity, there may be other environmental factors controlled by the seasons that contribute to higher levels of influenza virus infections in the winter months.



**Figure 5**

Possible mechanisms of increased host susceptibility to respiratory virus infections in winter. Inhalation of cold dry air directly affects the upper airway mucosa, impairs mucociliary clearance, and increases mucin production. In addition, inhalation of dry air per se causes epithelial damage. A short daylight period and consequent deficiency of vitamin D impair direct pathogen clearance. Cold and dry air impairs local antiviral innate immune responses after viral infection. Abbreviations: DC, dendritic cell; IFN, interferon; ROS, reactive oxygen species. Figure adapted from image created with BioRender.com.

How might we use these insights to prevent respiratory infections and illnesses in the winter months? In addition to vaccines and antiviral drugs, nonpharmaceutical interventions to prevent respiratory infections are gaining attention. Lifestyle (eating healthy, sleeping more than 7 h/day) and hygiene practices (washing hands, wearing face masks) are known to increase antimicrobial resistance and prevent transmission, respectively (118–121). In addition to these measures, we might consider controlling the indoor environment to combat respiratory infections. Such interventions with humidifiers have been realized since the 1960s with promising results (122–127). More recently, a study in Minnesota found that humidifying preschool classrooms during January to March to ~45% RH results in a significant reduction in the total number of influenza virus and viral genome copies found in the air and on objects compared to control classrooms (128). Such nonpharmaceutical interventions can be combined with vaccination strategies to achieve better prevention of respiratory viral infections (**Table 2**).

**Table 2** Tips for limiting respiratory virus transmission in winter

Tips	Related reference(s)
Humidification of indoor air to maintain humidity to 40–60% relative humidity at room temperature	47, 49, 52, 70, 113, 128
Ventilation of indoor air	69
Wearing face mask to keep the nose warm and moist	88, 90, 93, 99, 100
Vitamin D supplement to compensate for short daylight–induced vitamin D deficiency	103, 104, 118, 120
Sleeping more than 7 h/day	119
Washing hands to prevent indirect contact transmission	120, 121

## DISCLOSURE STATEMENT

W.J.H. is a medical consultant to Condair AG. The Iwasaki Laboratory received a gift from Condair AG.

## ACKNOWLEDGMENTS

We thank current and past laboratory members, in particular Laura Yockey, Eriko Kudo, Eric Song, Tasfia Rakib, Melissa Linehan, Huiping Dong, Patrick Wong, and Ellen Foxman, and our collaborators Robert Homer, Anna Pyle, and Paul Turner for their discoveries and contributions in this area of research. This work was in part supported by the Howard Hughes Medical Institute, Japan Society for the Promotion of Science, Naito Foundation, and National Institutes of Health grants. We thank Adriano Aguzzi and Stephanie Taylor for scientific advice.

## LITERATURE CITED

1. Pappas G, Kiriakos IJ, Falagas ME. 2008. Insights into infectious disease in the era of Hippocrates. *Int. J. Infect. Dis.* 12:347–50
2. Fendrick AM, Monto AS, Nightengale B, Sarnes M. 2003. The economic burden of non-influenza-related viral respiratory tract infection in the United States. *Arch. Intern. Med.* 163:487–94
3. Molinari NA, Ortega-Sanchez IR, Messonnier ML, Thompson WW, Wortley PM, et al. 2007. The annual impact of seasonal influenza in the US: measuring disease burden and costs. *Vaccine* 25:5086–96
4. Li Q, Guan X, Wu P, Wang X, Zhou L, et al. 2020. Early transmission dynamics in Wuhan, China, of novel coronavirus-infected pneumonia. *N. Engl. J. Med.* 382:1199–207
5. Paules CI, Marston HD, Fauci AS. 2020. Coronavirus infections—more than just the common cold. *JAMA* 323:707–8
6. Kuiken T, Fouchier RA, Schutten M, Rimmelzwaan GF, van Amerongen G, et al. 2003. Newly discovered coronavirus as the primary cause of severe acute respiratory syndrome. *Lancet* 362:263–70
7. Peiris JS, Lai ST, Poon LL, Guan Y, Yam LY, et al. 2003. Coronavirus as a possible cause of severe acute respiratory syndrome. *Lancet* 361:1319–25
8. Fisman D. 2012. Seasonality of viral infections: mechanisms and unknowns. *Clin. Microbiol. Infect.* 18:946–54
9. Dowell SF. 2001. Seasonal variation in host susceptibility and cycles of certain infectious diseases. *Emerg. Infect. Dis.* 7:369–74
10. Cannell JJ, Vieth R, Umhau JC, Holick MF, Grant WB, et al. 2006. Epidemic influenza and vitamin D. *Epidemiol. Infect.* 134:1129–40
11. Sloan C, Moore ML, Hartert T. 2011. Impact of pollution, climate, and sociodemographic factors on spatiotemporal dynamics of seasonal respiratory viruses. *Clin. Transl. Sci.* 4:48–54
12. Shaman J, Kohn M. 2009. Absolute humidity modulates influenza survival, transmission, and seasonality. *PNAS* 106:3243–48
13. Azziz Baumgartner E, Dao CN, Nasreen S, Bhuiyan MU, Mah EMS, et al. 2012. Seasonality, timing, and climate drivers of influenza activity worldwide. *J. Infect. Dis.* 206:838–46
14. Tamerius J, Nelson MI, Zhou SZ, Viboud C, Miller MA, Alonso WJ. 2011. Global influenza seasonality: reconciling patterns across temperate and tropical regions. *Environ. Health Perspect.* 119:439–45
15. Shoji M, Katayama K, Sano K. 2011. Absolute humidity as a deterministic factor affecting seasonal influenza epidemics in Japan. *Toboku J. Exp. Med.* 224:251–56
16. Peci A, Winter AL, Li Y, Gnaneshan S, Liu J, et al. 2019. Effects of absolute humidity, relative humidity, temperature, and wind speed on influenza activity in Toronto, Ontario, Canada. *Appl. Environ. Microbiol.* 85:e02426-18
17. Mourtzoukou EG, Falagas ME. 2007. Exposure to cold and respiratory tract infections. *Int. J. Tuberc. Lung Dis.* 11:938–43

18. Shaman J, Pitzer VE, Viboud C, Grenfell BT, Lipsitch M. 2010. Absolute humidity and the seasonal onset of influenza in the continental United States. *PLoS Biol.* 8:e1000316
19. Quinn A, Shaman J. 2017. Health symptoms in relation to temperature, humidity, and self-reported perceptions of climate in New York City residential environments. *Int. J. Biometeorol.* 61:1209–20
20. Reynolds SJ, Black DW, Borin SS, Breuer G, Burmeister LF, et al. 2001. Indoor environmental quality in six commercial office buildings in the midwest United States. *Appl. Occup. Environ. Hyg.* 16:1065–77
21. Willem L, Van Kerckhove K, Chao DL, Hens N, Beutels P. 2012. A nice day for an infection? Weather conditions and social contact patterns relevant to influenza transmission. *PLoS ONE* 7:e48695
22. Schweizer C, Edwards RD, Bayer-Oglesby L, Gauderman WJ, Ilacqua V, et al. 2007. Indoor time–microenvironment–activity patterns in seven regions of Europe. *J. Expo. Sci. Environ. Epidemiol.* 17:170–81
23. Klepeis NE, Nelson WC, Ott WR, Robinson JP, Tsang AM, et al. 2001. The National Human Activity Pattern Survey (NHAPS): a resource for assessing exposure to environmental pollutants. *J. Expo. Anal. Environ. Epidemiol.* 11:231–52
24. Foxman EF, Iwasaki A. 2011. Genome-virome interactions: examining the role of common viral infections in complex disease. *Nat. Rev. Microbiol.* 9:254–64
25. Nichols WG, Peck Campbell AJ, Boeckh M. 2008. Respiratory viruses other than influenza virus: impact and therapeutic advances. *Clin. Microbiol. Rev.* 21:274–90
26. Pavia AT. 2011. Viral infections of the lower respiratory tract: old viruses, new viruses, and the role of diagnosis. *Clin. Infect. Dis.* 52(Suppl. 4):S284–89
27. Midgley CM, Haynes AK, Baumgardner JL, Chommanard C, Demas SW, et al. 2017. Determining the seasonality of respiratory syncytial virus in the United States: the impact of increased molecular testing. *J. Infect. Dis.* 216:345–55
28. Killerby ME, Biggs HM, Haynes A, Dahl RM, Mustaquim D, et al. 2018. Human coronavirus circulation in the United States 2014–2017. *J. Clin. Virol.* 101:52–56
29. Monto AS. 2002. Epidemiology of viral respiratory infections. *Am. J. Med.* 112(Suppl. 6A):4S–12S
30. Landes MB, Neil RB, McCool SS, Mason BP, Woron AM, et al. 2013. The frequency and seasonality of influenza and other respiratory viruses in Tennessee: two influenza seasons of surveillance data, 2010–2012. *Influenza Other Respir. Viruses* 7:1122–27
31. Morikawa S, Kohdera U, Hosaka T, Ishii K, Akagawa S, et al. 2015. Seasonal variations of respiratory viruses and etiology of human rhinovirus infection in children. *J. Clin. Virol.* 73:14–19
32. Bastien N, Brandt K, Dust K, Ward D, Li Y. 2006. Human Bocavirus infection, Canada. *Emerg. Infect. Dis.* 12:848–50
33. Haynes AK, Fowlkes AL, Schneider E, Mutuc JD, Armstrong GL, Gerber SI. 2016. Human metapneumovirus circulation in the United States, 2008 to 2014. *Pediatrics* 137:e20152927
34. Abedi GR, Watson JT, Nix WA, Oberste MS, Gerber SI. 2018. Enterovirus and parechovirus surveillance—United States, 2014–2016. *MMWR Morb. Mortal. Wkly. Rep.* 67:515–18
35. Lee WM, Lemanske RF Jr., Evans MD, Vang F, Pappas T, et al. 2012. Human rhinovirus species and season of infection determine illness severity. *Am. J. Respir. Crit. Care Med.* 186:886–91
36. Monto AS. 2002. The seasonality of rhinovirus infections and its implications for clinical recognition. *Clin. Ther.* 24:1987–97
37. Abedi GR, Prill MM, Langley GE, Wikswø ME, Weinberg GA, et al. 2016. Estimates of parainfluenza virus-associated hospitalizations and cost among children aged less than 5 years in the United States, 1998–2010. *J. Pediatr. Infect. Dis. Soc.* 5:7–13
38. Anestad G. 1982. Interference between outbreaks of respiratory syncytial virus and influenza virus infection. *Lancet* 1:502
39. Linde A, Rotzen-Ostlund M, Zwegberg-Wirgart B, Rubinova S, Brytting M. 2009. Does viral interference affect spread of influenza? *Euro Surveill.* 14:19354
40. Casalegno JS, Ottmann M, Duchamp MB, Escuret V, Billaud G, et al. 2010. Rhinoviruses delayed the circulation of the pandemic influenza A (H1N1) 2009 virus in France. *Clin. Microbiol. Infect.* 16:326–29

41. Nickbakhsh S, Mair C, Matthews L, Reeve R, Johnson PCD, et al. 2019. Virus–virus interactions impact the population dynamics of influenza and the common cold. *PNAS* 116(52):27142–50
42. Gonzalez AJ, Ijezie EC, Balemba OB, Miura TA. 2018. Attenuation of influenza A virus disease severity by viral coinfection in a mouse model. *J. Virol.* 92:e00881-18
43. Chan KF, Carolan LA, Korenkov D, Druce J, McCaw J, et al. 2018. Investigating viral interference between influenza A virus and human respiratory syncytial virus in a ferret model of infection. *J. Infect. Dis.* 218:406–17
44. Bhattacharyya S, Gesteland PH, Korgenski K, Bjornstad ON, Adler FR. 2015. Cross-immunity between strains explains the dynamical pattern of paramyxoviruses. *PNAS* 112:13396–400
45. Brankston G, Gitterman L, Hirji Z, Lemieux C, Gardam M. 2007. Transmission of influenza A in human beings. *Lancet Infect. Dis.* 7:257–65
46. Weber TP, Stilianakis NI. 2008. Inactivation of influenza A viruses in the environment and modes of transmission: a critical review. *J. Infect.* 57:361–73
47. Lowen A, Palese P. 2009. Transmission of influenza virus in temperate zones is predominantly by aerosol, in the tropics by contact: a hypothesis. *PLOS Curr.* 1:RRN1002
48. Yang W, Marr LC. 2011. Dynamics of airborne influenza A viruses indoors and dependence on humidity. *PLOS ONE* 6:e21481
49. Yang W, Elankumaran S, Marr LC. 2012. Relationship between humidity and influenza A viability in droplets and implications for influenza's seasonality. *PLOS ONE* 7:e46789
50. Yang W, Marr LC. 2012. Mechanisms by which ambient humidity may affect viruses in aerosols. *Appl. Environ. Microbiol.* 78:6781–88
51. Irwin CK, Yoon KJ, Wang C, Hoff SJ, Zimmerman JJ, et al. 2011. Using the systematic review methodology to evaluate factors that influence the persistence of influenza virus in environmental matrices. *Appl. Environ. Microbiol.* 77:1049–60
52. Lowen AC, Mubareka S, Steel J, Palese P. 2007. Influenza virus transmission is dependent on relative humidity and temperature. *PLOS Pathog.* 3:1470–76
53. Lowen AC, Steel J, Mubareka S, Palese P. 2008. High temperature (30 degrees C) blocks aerosol but not contact transmission of influenza virus. *J. Virol.* 82:5650–52
54. Gustin KM, Belser JA, Veguilla V, Zeng H, Katz JM, et al. 2015. Environmental conditions affect exhalation of H3N2 seasonal and variant influenza viruses and respiratory droplet transmission in ferrets. *PLOS ONE* 10:e0125874
55. Marr LC, Tang JW, Van Mullekom J, Lakdawala SS. 2019. Mechanistic insights into the effect of humidity on airborne influenza virus survival, transmission and incidence. *J. R. Soc. Interface* 16:20180298
56. Noti JD, Blachere FM, McMillen CM, Lindsley WG, Kashon ML, et al. 2013. High humidity leads to loss of infectious influenza virus from simulated coughs. *PLOS ONE* 8:e57485
57. Harper GJ. 1961. Airborne micro-organisms: survival tests with four viruses. *Epidemiol. Infect.* 59:479–86
58. Miller WS, Artenstein MS. 1967. Aerosol stability of three acute respiratory disease viruses. *Proc. Soc. Exp. Biol. Med.* 125:222–27
59. Ijaz MK, Brunner AH, Sattar SA, Nair RC, Johnson-Lussenburg CM. 1985. Survival characteristics of airborne human coronavirus 229E. *J. Gen. Virol.* 66(12):2743–48
60. Rechsteiner J. 1969. Inactivation of respiratory syncytial virus in air. *Antonie Van Leeuwenhoek* 35:238
61. Karim YG, Ijaz MK, Sattar SA, Johnson-Lussenburg CM. 1985. Effect of relative humidity on the airborne survival of rhinovirus-14. *Can. J. Microbiol.* 31:1058–61
62. Hemmes JH, Winkler KC, Kool SM. 1960. Virus survival as a seasonal factor in influenza and poliomyelitis. *Nature* 188:430–31
63. Polozov IV, Bezrukov L, Gawrisch K, Zimmerberg J. 2008. Progressive ordering with decreasing temperature of the phospholipids of influenza virus. *Nat. Chem. Biol.* 4:248–55
64. Schulman JL, Kilbourne ED. 1963. Experimental transmission of influenza virus infection in mice. I. The period of transmissibility. *J. Exp. Med.* 118:257–66
65. Schulman JL, Kilbourne ED. 1963. Experimental transmission of influenza virus infection in mice. II. Some factors affecting the incidence of transmitted infection. *J. Exp. Med.* 118:267–75



66. Herlocher ML, Elias S, Truscon R, Harrison S, Mindell D, et al. 2001. Ferrets as a transmission model for influenza: sequence changes in HA1 of type A (H3N2) virus. *J. Infect. Dis.* 184:542–46
67. Lowen AC, Mubareka S, Tumpey TM, Garcia-Sastre A, Palese P. 2006. The guinea pig as a transmission model for human influenza viruses. *PNAS* 103:9988–92
68. Belser JA, Katz JM, Tumpey TM. 2011. The ferret as a model organism to study influenza A virus infection. *Dis. Model. Mech.* 4:575–79
69. Schulman JL, Kilbourne ED. 1962. Airborne transmission of influenza virus infection in mice. *Nature* 195:1129–30
70. Lester W Jr. 1948. The influence of relative humidity on the infectivity of air-borne influenza A virus, PR8 strain. *J. Exp. Med.* 88:361–68
71. Van Hoeven N, Belser JA, Szretter KJ, Zeng H, Staeheli P, et al. 2009. Pathogenesis of 1918 pandemic and H5N1 influenza virus infections in a guinea pig model: antiviral potential of exogenous alpha interferon to reduce virus shedding. *J. Virol.* 83:2851–61
72. Steel J, Palese P, Lowen AC. 2011. Transmission of a 2009 pandemic influenza virus shows a sensitivity to temperature and humidity similar to that of an H3N2 seasonal strain. *J. Virol.* 85:1400–2
73. Iwasaki A, Foxman EF, Molony RD. 2017. Early local immune defences in the respiratory tract. *Nat. Rev. Immunol.* 17:7–20
74. Fokkens WJ, Scheeren RA. 2000. Upper airway defence mechanisms. *Paediatr. Respir. Rev.* 1:336–41
75. Bustamante-Marin XM, Ostrowski LE. 2017. Cilia and mucociliary clearance. *Cold Spring Harb. Perspect. Biol.* 9:a028241
76. Hamed R, Fiegel J. 2014. Synthetic tracheal mucus with native rheological and surface tension properties. *J. Biomed. Mater. Res. A* 102:1788–98
77. Thornton DJ, Gray T, Nettekheim P, Howard M, Koo JS, Sheehan JK. 2000. Characterization of mucins from cultured normal human tracheobronchial epithelial cells. *Am. J. Physiol. Lung Cell Mol. Physiol.* 278:L1118–28
78. Tian PW, Wen FQ. 2015. Clinical significance of airway mucus hypersecretion in chronic obstructive pulmonary disease. *J. Transl. Int. Med.* 3:89–92
79. Donaldson GC, Seemungal T, Jeffries DJ, Wedzicha JA. 1999. Effect of temperature on lung function and symptoms in chronic obstructive pulmonary disease. *Eur. Respir. J.* 13:844–49
80. McKemy DD, Neuhauser WM, Julius D. 2002. Identification of a cold receptor reveals a general role for TRP channels in thermosensation. *Nature* 416:52–58
81. Peier AM, Moqrich A, Hergarden AC, Reeve AJ, Andersson DA, et al. 2002. A TRP channel that senses cold stimuli and menthol. *Cell* 108:705–15
82. Li M, Li Q, Yang G, Kolosov VP, Perelman JM, Zhou XD. 2011. Cold temperature induces mucin hypersecretion from normal human bronchial epithelial cells in vitro through a transient receptor potential melastatin 8 (TRPM8)-mediated mechanism. *J. Allergy Clin. Immunol.* 128:626–34
83. Baetjer AM. 1967. Effect of ambient temperature and vapor pressure on cilia-mucus clearance rate. *J. Appl. Physiol.* 23:498–504
84. Even-Tzur N, Zaretsky U, Grinberg O, Davidovich T, Kloog Y, et al. 2010. Climate chamber for environmentally controlled laboratory airflow experiments. *Technol. Health Care* 18:157–63
85. Iwasaki A. 2007. Mucosal dendritic cells. *Annu. Rev. Immunol.* 25:381–418
86. Erjefalt JS, Erjefalt I, Sundler F, Persson CG. 1995. In vivo restitution of airway epithelium. *Cell Tissue Res.* 281:305–16
87. Barbet JP, Chauveau M, Labbe S, Lockhart A. 1988. Breathing dry air causes acute epithelial damage and inflammation of the guinea pig trachea. *J. Appl. Physiol.* 64:1851–57
88. Kudo E, Song E, Yockey LJ, Rakib T, Wong PW, et al. 2019. Low ambient humidity impairs barrier function and innate resistance against influenza infection. *PNAS* 116:10905–10
89. Clary-Meinesz CF, Cosson J, Huitorel P, Blaive B. 1992. Temperature effect on the ciliary beat frequency of human nasal and tracheal ciliated cells. *Biol. Cell* 76:335–38
90. Williams R, Rankin N, Smith T, Galler D, Seakins P. 1996. Relationship between the humidity and temperature of inspired gas and the function of the airway mucosa. *Crit. Care Med.* 24:1920–29

91. Rogers TD, Ostrowski LE, Livraghi-Butrico A, Button B, Grubb BR. 2018. Mucociliary clearance in mice measured by tracking trans-tracheal fluorescence of nasally aerosolized beads. *Sci. Rep.* 8:14744
92. Andersen I, Lundqvist GR, Jensen PL, Proctor DF. 1974. Human response to 78-hour exposure to dry air. *Arch. Environ. Health* 29:319–24
93. Ewert G. 1965. On the mucus flow rate in the human nose. *Acta Otolaryngol. Suppl.* 200:SUPPL-200
94. Soane RJ, Carney AS, Jones NS, Frier M, Perkins AC, et al. 2001. The effect of the nasal cycle on mucociliary clearance. *Clin. Otolaryngol. Allied Sci.* 26:9–15
95. Seo H, Kim SH, Choi JH, Hong JY, Hwang JH. 2014. Effect of heated humidified ventilation on bronchial mucus transport velocity in general anaesthesia: a randomized trial. *J. Int. Med. Res.* 42:1222–31
96. Chalon J, Loew DA, Malebranche J. 1972. Effects of dry anesthetic gases on tracheobronchial ciliated epithelium. *Anesthesiology* 37:338–43
97. Iwasaki A, Medzhitov R. 2010. Regulation of adaptive immunity by the innate immune system. *Science* 327:291–95
98. Ivashkiv LB, Donlin LT. 2014. Regulation of type I interferon responses. *Nat. Rev. Immunol.* 14:36–49
99. Foxman EF, Storer JA, Fitzgerald ME, Wasik BR, Hou L, et al. 2015. Temperature-dependent innate defense against the common cold virus limits viral replication at warm temperature in mouse airway cells. *PNAS* 112:827–32
100. Foxman EF, Storer JA, Vanaja K, Levchenko A, Iwasaki A. 2016. Two interferon-independent double-stranded RNA-induced host defense strategies suppress the common cold virus at warm temperature. *PNAS* 113:8496–501
101. Moriyama M, Ichinohe T. 2019. High ambient temperature dampens adaptive immune responses to influenza A virus infection. *PNAS* 116:3118–25
102. Pillai PS, Molony RD, Martinod K, Dong H, Pang IK, et al. 2016. Mx1 reveals innate pathways to antiviral resistance and lethal influenza disease. *Science* 352:463–66
103. Yellon SM, Fagoaga OR, Nehlsen-Cannarella SL. 1999. Influence of photoperiod on immune cell functions in the male Siberian hamster. *Am. J. Physiol.* 276:R97–102
104. Abu-Amer Y, Bar-Shavit Z. 1993. Impaired bone marrow-derived macrophage differentiation in vitamin D deficiency. *Cell Immunol.* 151:356–68
105. Braciale TJ, Sun J, Kim TS. 2012. Regulating the adaptive immune response to respiratory virus infection. *Nat. Rev. Immunol.* 12:295–305
106. Vinuesa CG, Linterman MA, Yu D, MacLennan IC. 2016. Follicular helper T cells. *Annu. Rev. Immunol.* 34:335–68
107. Kokolus KM, Capitano ML, Lee CT, Eng JW, Waight JD, et al. 2013. Baseline tumor growth and immune control in laboratory mice are significantly influenced by subthermoneutral housing temperature. *PNAS* 110:20176–81
108. Eng JW, Reed CB, Kokolus KM, Pitoniak R, Utley A, et al. 2015. Housing temperature-induced stress drives therapeutic resistance in murine tumour models through  $\beta$ 2-adrenergic receptor activation. *Nat. Commun.* 6:6426
109. Leigh ND, Kokolus KM, O'Neill RE, Du W, Eng JW, et al. 2015. Housing temperature-induced stress is suppressing murine graft-versus-host disease through  $\beta$ 2-adrenergic receptor signaling. *J. Immunol.* 195:5045–54
110. Fox SJ, Miller JC, Meyers LA. 2017. Seasonality in risk of pandemic influenza emergence. *PLOS Comput. Biol.* 13:e1005749
111. Medzhitov R, Schneider DS, Soares MP. 2012. Disease tolerance as a defense strategy. *Science* 335:936–41
112. Molony RD, Nguyen JT, Kong Y, Montgomery RR, Shaw AC, Iwasaki A. 2017. Aging impairs both primary and secondary RIG-I signaling for interferon induction in human monocytes. *Sci. Signal.* 10:eaan2392
113. Arundel AV, Sterling EM, Biggin JH, Sterling TD. 1986. Indirect health effects of relative humidity in indoor environments. *Environ. Health Perspect.* 65:351–61
114. Zhou P, Yang X-L, Wang X-G, Hu B, Zhang L, et al. 2020. Discovery of a novel coronavirus associated with the recent pneumonia outbreak in humans and its potential bat origin. bioRxiv 2020.01.22.914952. <https://doi.org/10.1101/2020.01.22.914952>

115. Letko M, Munster V. 2020. Functional assessment of cell entry and receptor usage for lineage B  $\beta$ -coronaviruses, including 2019-nCoV. bioRxiv 2020.01.22.915660. <https://doi.org/10.1101/2020.01.22.915660>
116. Zhao Y, Zhao Z, Wang Y, Zhou Y, Ma Y, Zuo W. 2020. Single-cell RNA expression profiling of ACE2, the putative receptor of Wuhan 2019-nCoV. bioRxiv 2020.01.26.919985. <https://doi.org/10.1101/2020.01.26.919985>
117. Luo W, Majumder MS, Liu D, Poirier C, Mandl KD, et al. 2020. The role of absolute humidity on transmission rates of the COVID-19 outbreak. medRxiv 2020.02.12.20022467. <https://doi.org/10.1101/2020.02.12.20022467>
118. Rondanelli M, Miccono A, Lamburghini S, Avanzato I, Riva A, et al. 2018. Self-care for common colds: the pivotal role of vitamin D, vitamin C, zinc, and echinacea in three main immune interactive clusters (physical barriers, innate and adaptive immunity) involved during an episode of common colds—practical advice on dosages and on the time to take these nutrients/botanicals in order to prevent or treat common colds. *Evid. Based Complement. Alternat. Med.* 2018:5813095
119. Besedovsky L, Lange T, Haack M. 2019. The sleep-immune crosstalk in health and disease. *Physiol. Rev.* 99:1325–80
120. Lee BY, Shah M. 2012. Prevention of influenza in healthy children. *Expert Rev. Anti Infect. Ther.* 10:1139–52
121. Warren-Gash C, Fragaszy E, Hayward AC. 2013. Hand hygiene to reduce community transmission of influenza and acute respiratory tract infection: a systematic review. *Influenza Other Respir. Viruses* 7:738–49
122. Ritzel G. 1966. Sozialmedizinische Erhebungen zur Pathogenese und Prophylaxe von Erkältungskrankheiten. *Int. J. Public Health* 11:9–16
123. Sale CS. 1972. Humidification to reduce respiratory illnesses in nursery school children. *South. Med. J.* 65:882–85
124. Green GH. 1974. The effect of indoor relative humidity on absenteeism and colds in schools. *ASHRAE Trans.* 80:131–41
125. Green GH. 1985. Indoor relative humidities in winter and the related absenteeism. *ASHRAE Trans.* 91:643–56
126. Green GH. 1982. The positive and negative effects of building humidification. *ASHRAE Trans.* 88:1049–61
127. Gelperin A. 1973. Humidification and upper respiratory infection incidence. *Heating, Piping, Air Conditioning* 45:77–78
128. Reiman JM, Das B, Sindberg GM, Urban MD, Hammerlund MEM, et al. 2018. Humidity as a non-pharmaceutical intervention for influenza A. *PLOS ONE* 13:e0204337